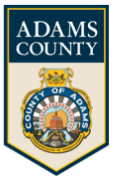




ONWARD2050

Adams County Long Range Transportation Plan



Office of
**PLANNING and
DEVELOPMENT**

ACM Presentation
June 22, 2022

PLAN STRUCTURE



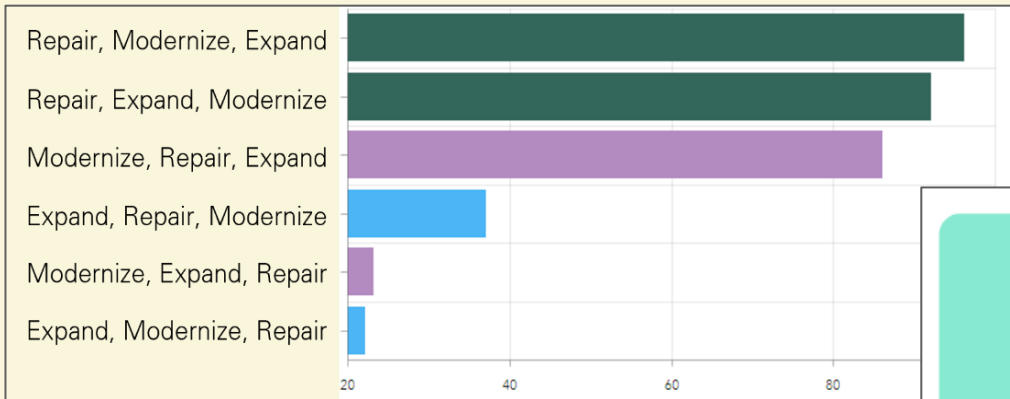
ONWARD2050

Adams County Long Range Transportation Plan

L RTP Overview

- Current L RTP adopted in 2017 – updated every 5 years
- Outline
 - 1) **INTRODUCTION:** General overview of ACTPO’s responsibilities / the transportation planning process
 - 2) **PUBLIC ENGAGEMENT:** Public outreach process, strategies, and feedback
 - 3) **GOALS AND OBJECTIVES:** Federal Planning Factors / State L RTP G&Os / Local G&Os
 - 4) **LAND USE AND SOCIOECONOMIC TRENDS:** Profile of current and projected trends
 - 5) **THE TRANSPORTATION NETWORK:** Snapshot of the current transportation network
 - 6) **TRANSPORTATION PERFORMANCE MANAGEMENT:** Required performance report
 - 7) **FUTURE STRATEGIES:** Future policy, planning, and action items
 - 8) **FINANCIAL GUIDANCE:** Future funding projections for a fiscally constrained improvements plan
 - 9) **PROJECT PRIORITIZATION:** Framework for prioritizing and ranking projects
 - 10) **ENVIRONMENTAL AND CULTURAL ANALYSIS:** Environmental and cultural considerations
 - 11) **ENVIRONMENTAL JUSTICE:** EJ Analysis
 - 12) **AIR QUALITY:** Air Quality Conformity Report and Analysis

Scenario Ranking



- 356 Public Surveys Submitted
- Survey Respondents ranked scenarios
 - Graph depicts ranking order

REPAIR

Repair Existing System

Funding allocated for the transportation system is used to repair the existing transportation infrastructure in the county.

Priorities include:

Pavement, Bridges, Safety [Repair existing measures], Signals, Signs

EXPAND

Expand Transportation System

Funding allocated for transportation is used to add additional services, facilities, and infrastructure to the transportation system.

Priorities include:

Connectivity, Bicycle and Pedestrian Facilities, Safety, Transit Service

MODERNIZE

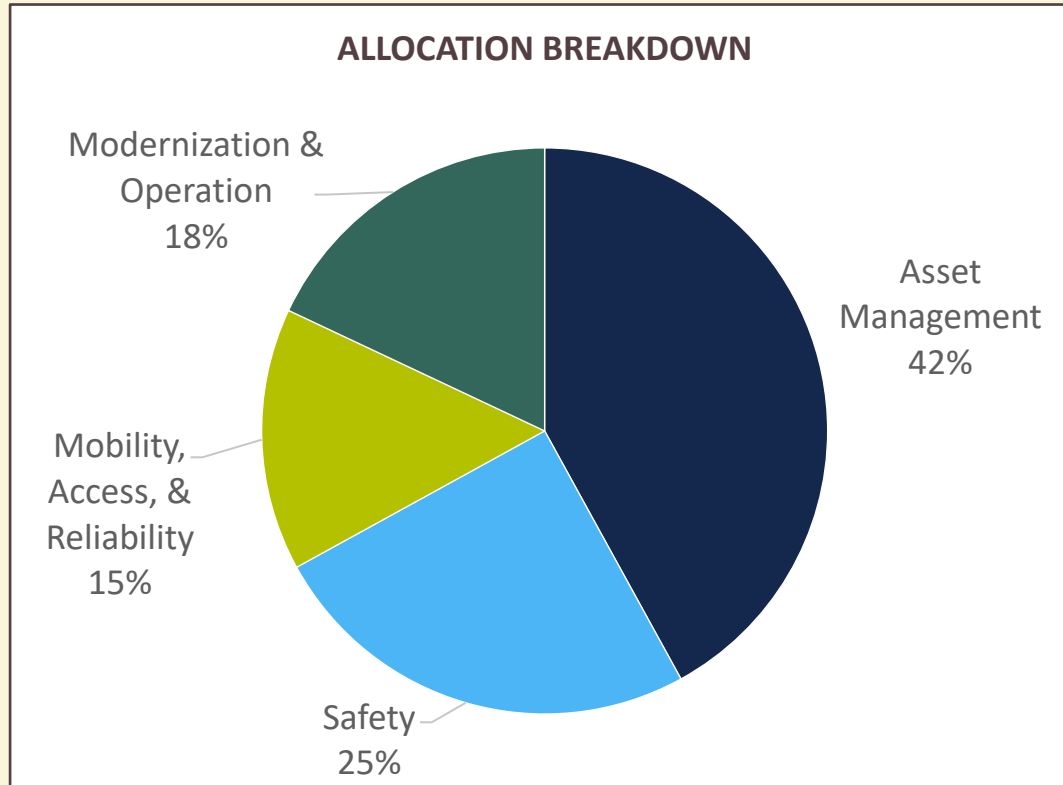
Modernize Transportation Network

Funding allocated for the transportation system is used to implement new technology for adapting to emerging trends and future needs.

Priorities include:

Safety, Alt. Fuels Infrastructure, Intelligent Transportation Systems (ITS), Connected and Autonomous Vehicles, Ride-hailing

Project Categories and Funding Allocation



FUNDING CLASSES	
Categories	% Overall Allocation
Safety	25%
Pavement	21%
Bridges	20%
Alternative Fuels	7%
Connectivity	6%
Active Transportation (Bicycle/Pedestrian)	5%
ITS	4%
Transit	4%
Freight/Rail	3%
Connected/ Autonomous Vehicles	2%
Signals	2%
Signs	1%

222 Identified Locations

Identified through:

- Public Comment Map
- Municipal Meetings
- Open-ended Survey Responses

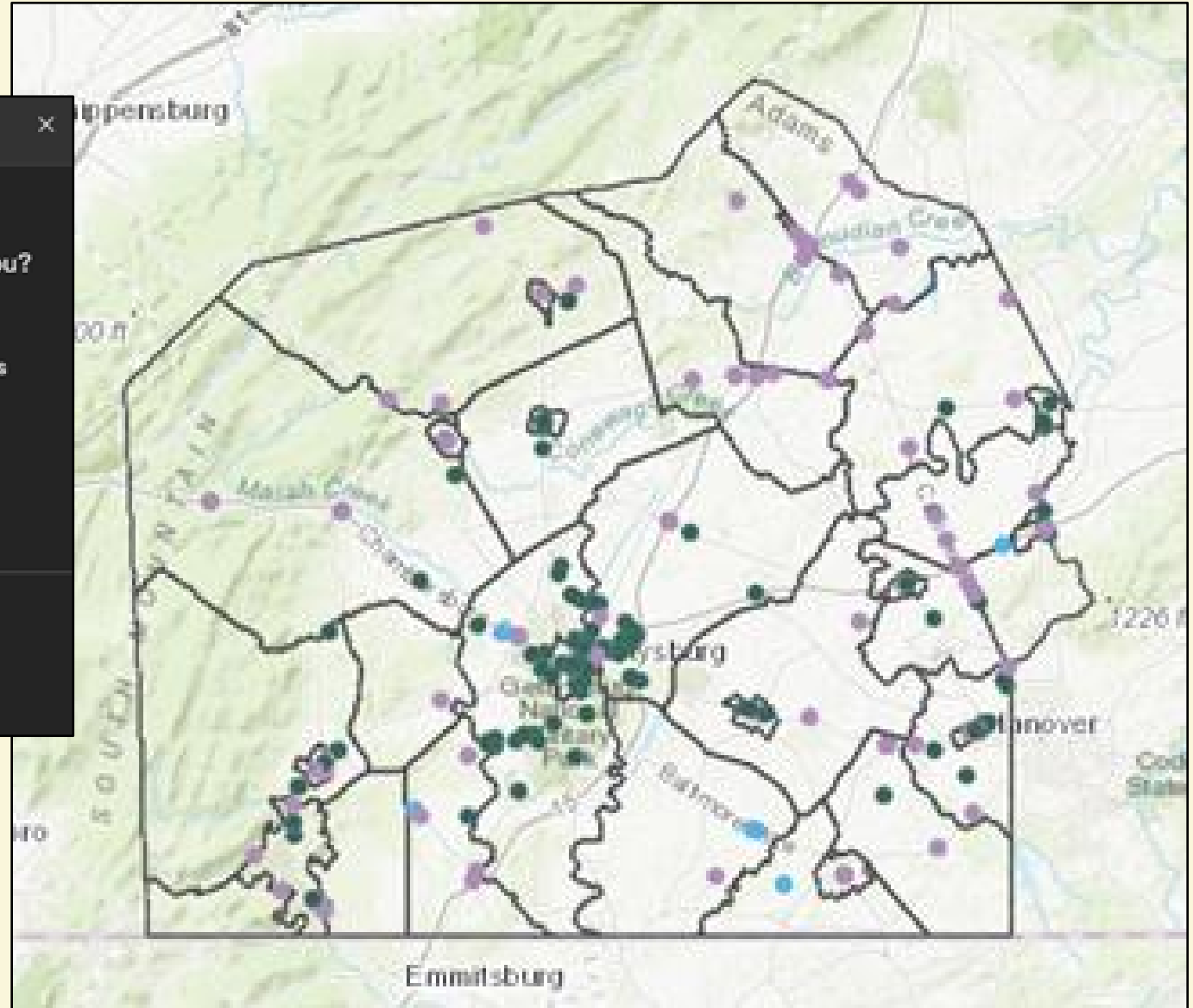
Legend

Public Comment

Which Statement Best Describes You?

- Live or Work in Adams County
- Own Property or a Business in Adams County
- Municipality (Borough or Township)
- Visit or Shop in Adams County

Municipal Boundary

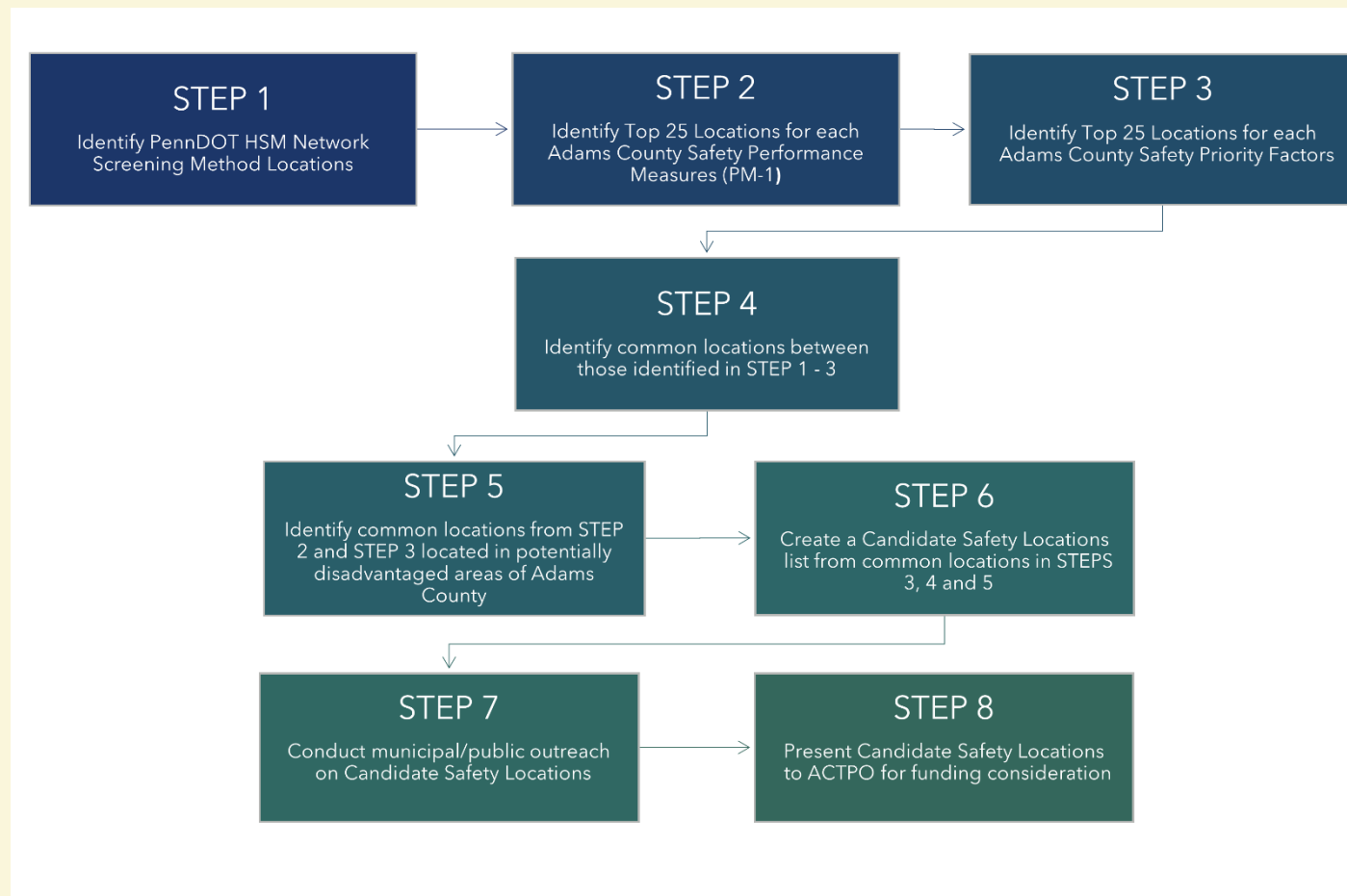


Project Prioritization

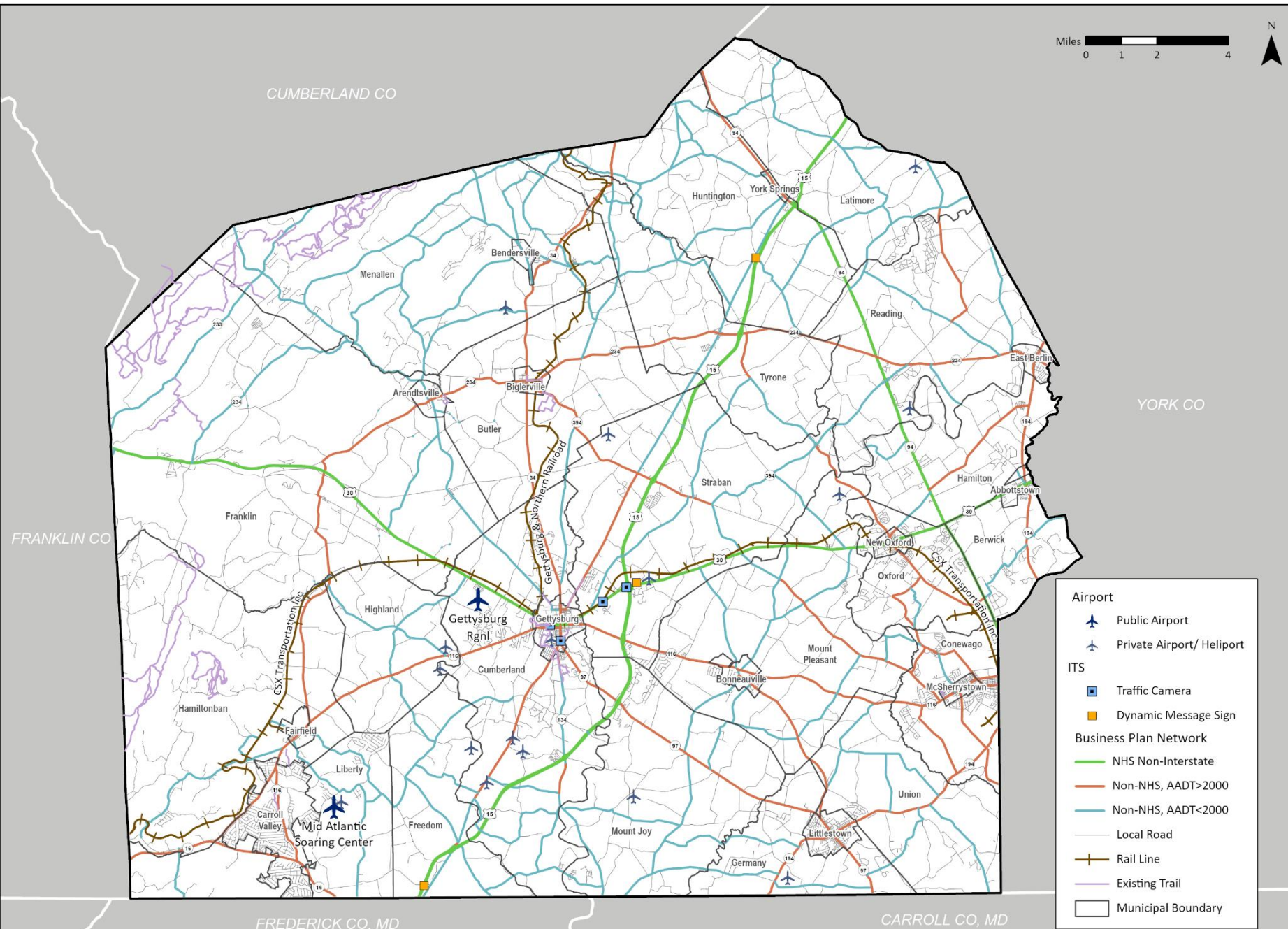
Ranking criteria established for project categories based on public feedback

- Asset Management
 - Pavement
 - Bridge
- Safety
- Mobility, Access, and Reliability
 - Connectivity
 - Transit
 - Active Transportation
- Modernization and Operation

Ex. Safety Ranking Criteria



TRANSPORTATION NETWORK



- 1,422 Miles of Roads
- 450 Bridges (380 State and 70 Local)
- 60 Miles of Railroad Tracks
- 50 Traffic Signals
- ITS Devices
 - 3 Dynamic Message Signs
 - 4 Traffic Cameras
- Public Transit Service
 - Fixed Route Service (Gettysburg/Hanover)
 - Express Bus Service (to Harrisburg)
 - Shared Ride (Paratransit)
- Airports
 - 2 Public
 - Private Use

Airport

- Public Airport
- Private Airport/ Heliport

ITS

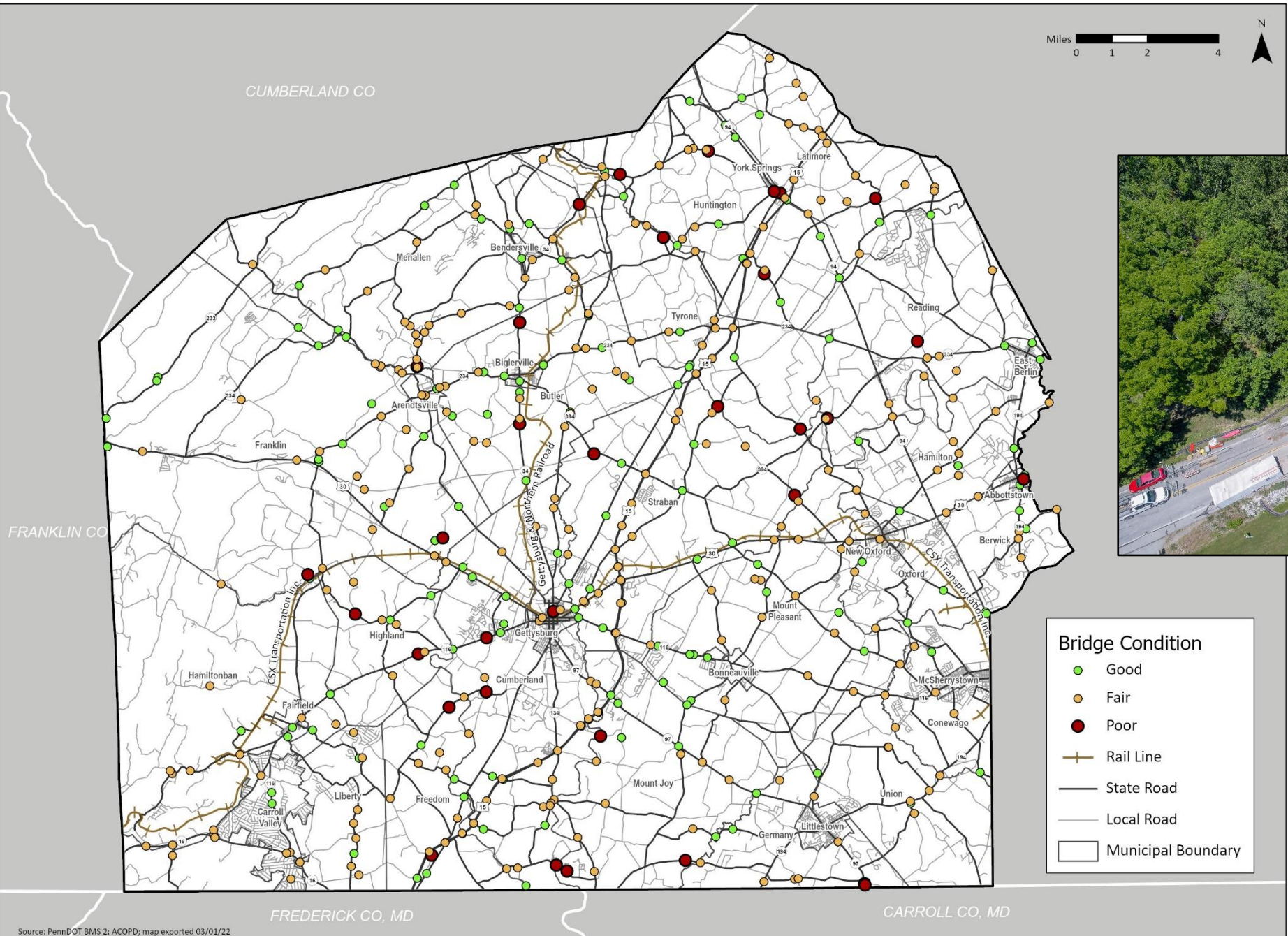
- Traffic Camera
- Dynamic Message Sign

Business Plan Network

- NHS Non-Interstate
- Non-NHS, AADT>2000
- Non-NHS, AADT<2000
- Local Road
- Rail Line
- Existing Trail
- Municipal Boundary

Source: PennDOT, FAA, ACOFD; map exported 06/03/22

BRIDGE CONDITION

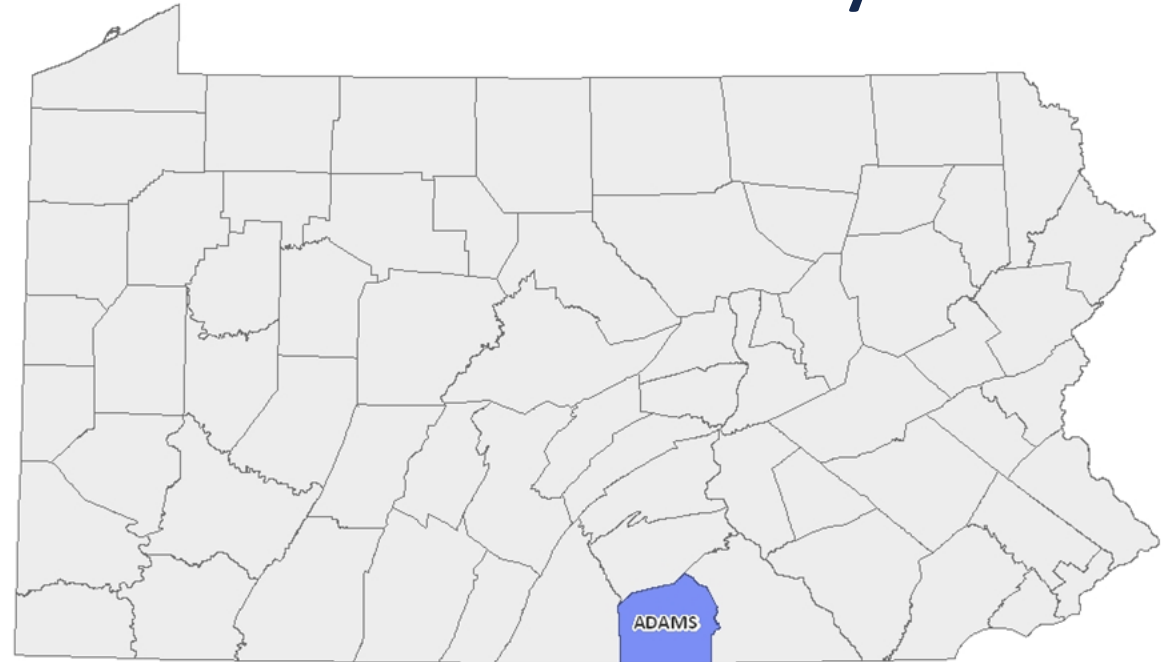


Bridge Condition

- Good
- Fair
- Poor
- Rail Line
- State Road
- Local Road
- Municipal Boundary

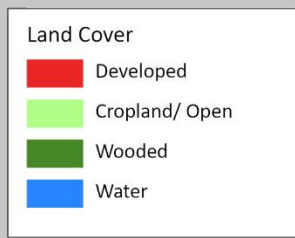
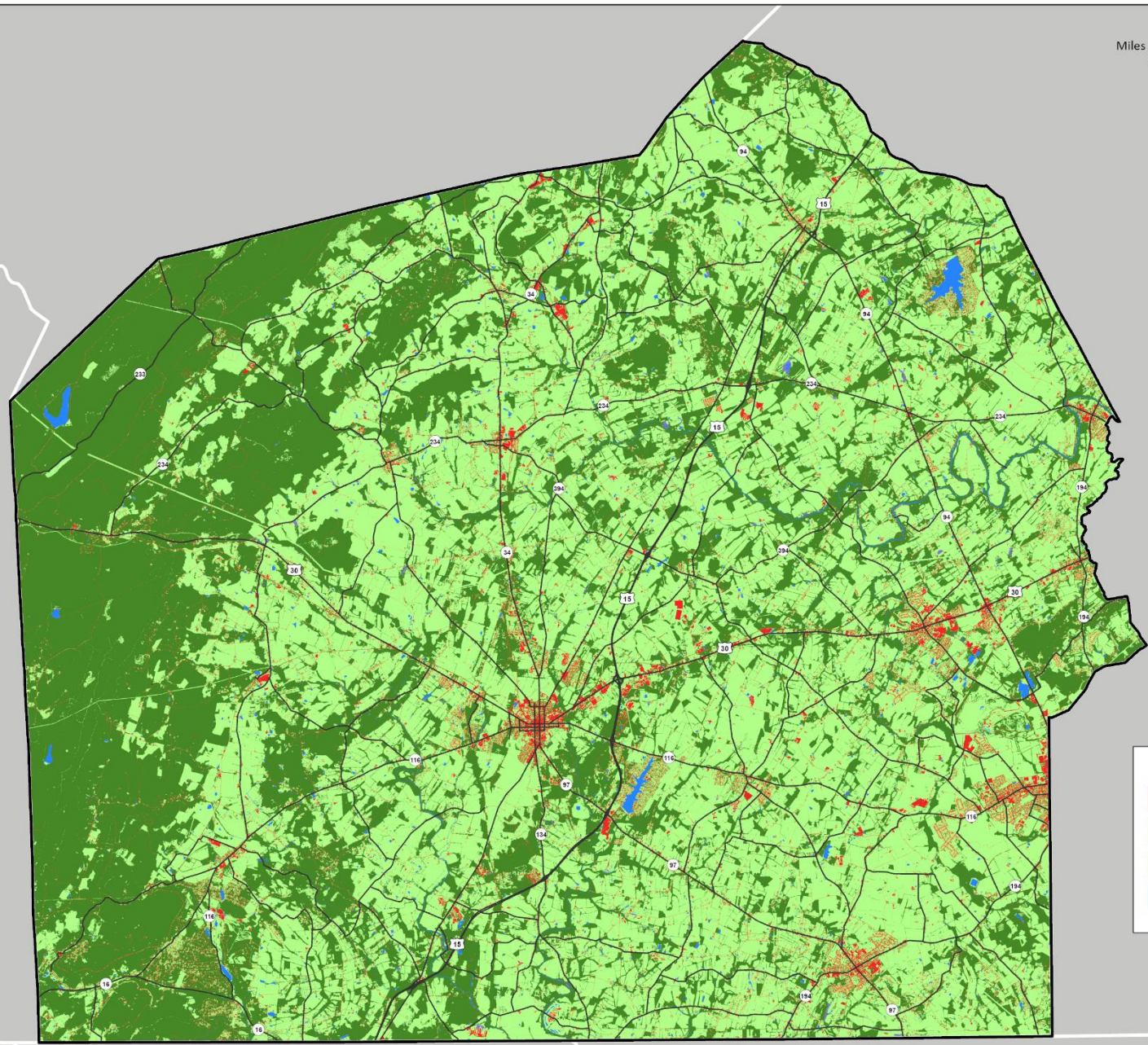
ENVIRONMENTAL CONSTRAINTS & CONSIDERATIONS

Adams County



- 34 Municipalities
- 526 Square Miles
- 336,640 Acres

LAND COVER



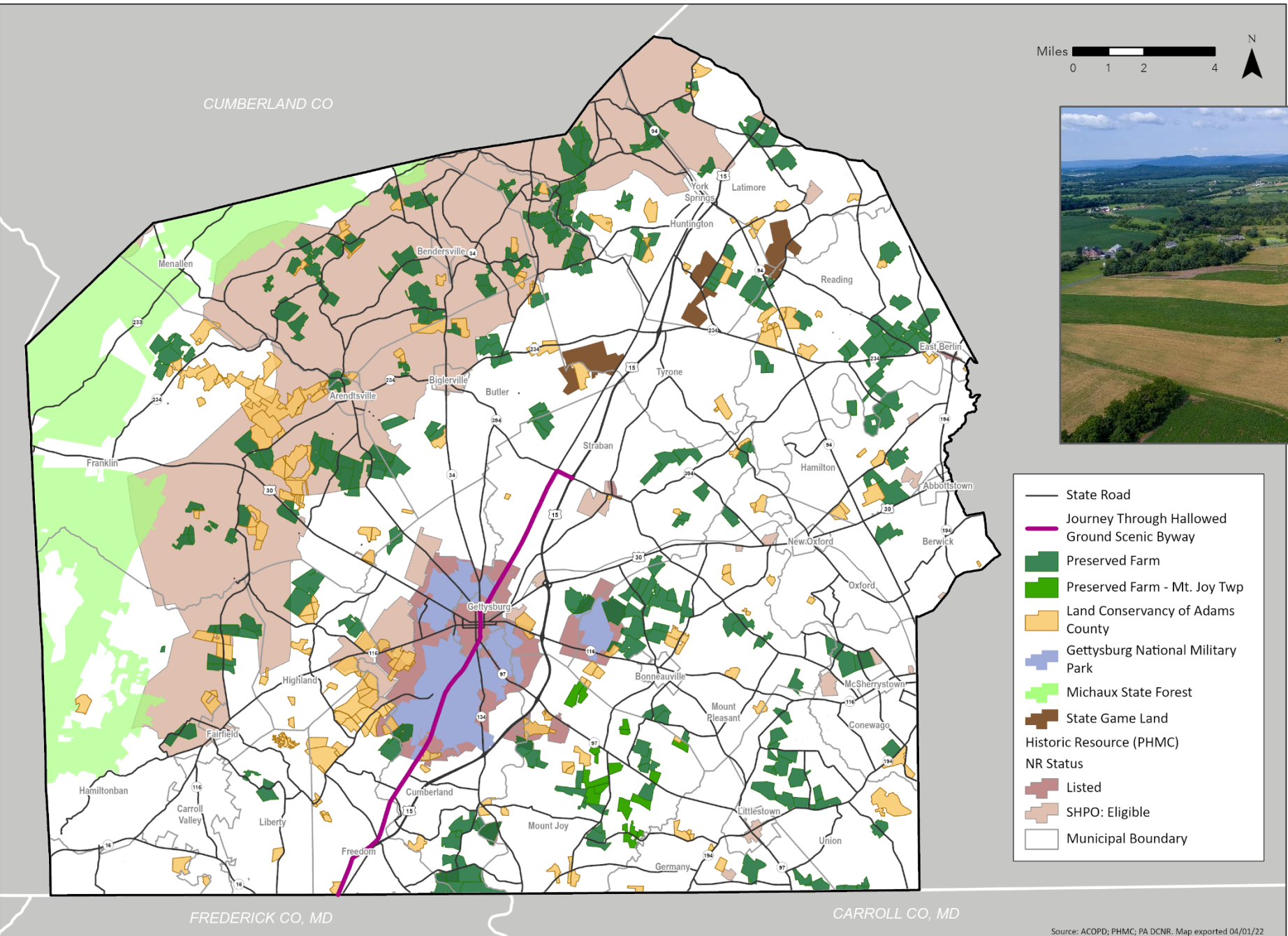
- **Population:** 103,852 (2020)
- **Housing Units:** 43,007
- **Avg Household Size:** 2.49



- Most development concentrated around town centers
- 166,227 Acres Farmed

Sources: 2020 Census, American Community Survey, 2017 Census of Ag

PROTECTED LANDS



Adams County Ag Land Preservation Program
23,609 Acres

Land Conservancy of Adams County
12,199 Acres

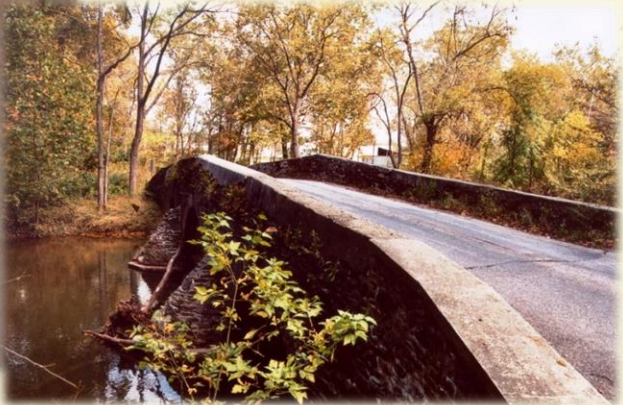
Municipal Programs
1,078 Acres

As of March 2022

Source: ACOPI; PHMC; PA DCNR. Map exported 04/01/22

Listed and Eligible Resources

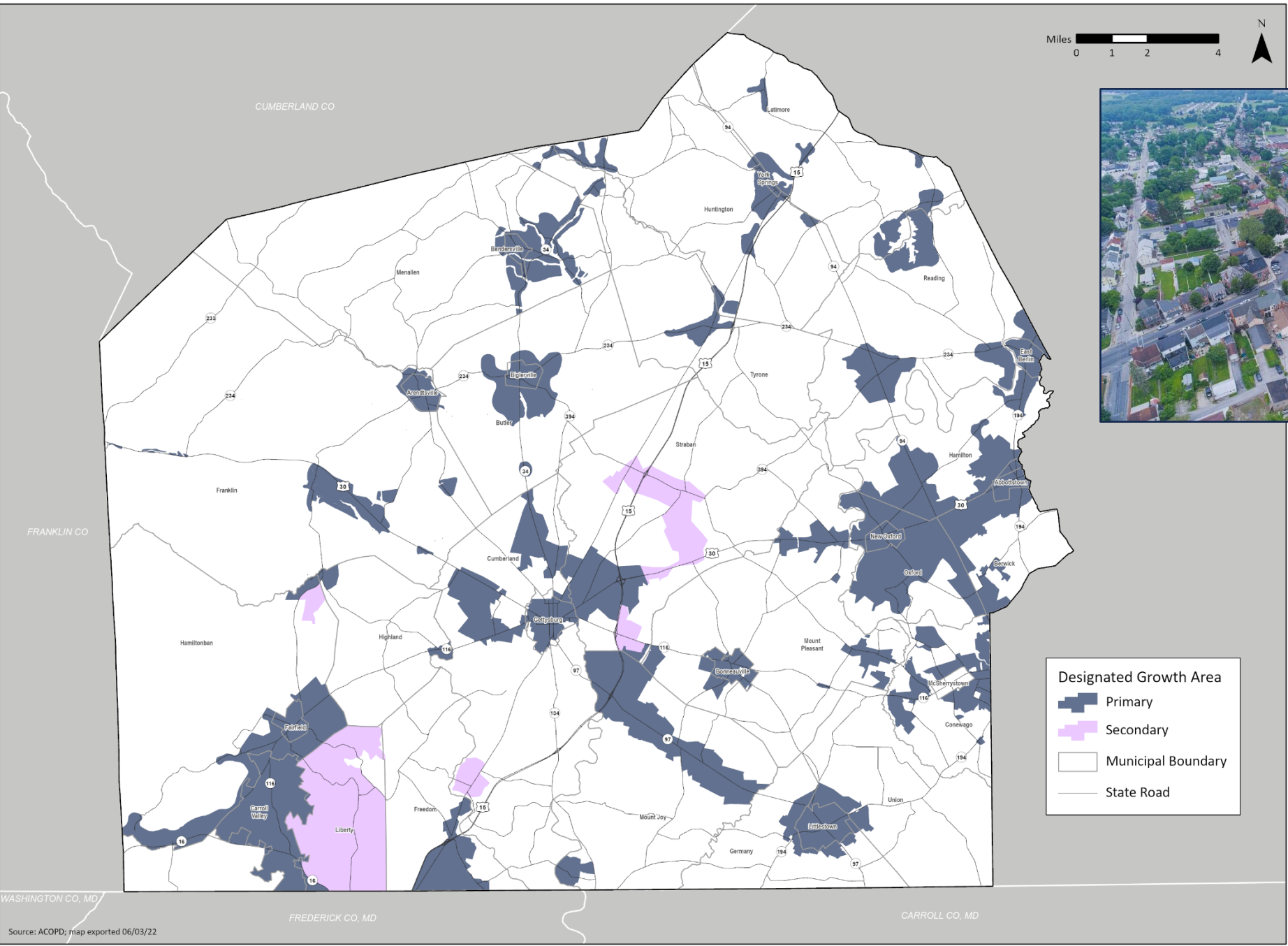
- Individual Resources: 78
- Historic Districts: 23
- Historic Bridges: 8



LWCF Funded Resources

MUNICIPALITY	LOCATION	SCOPE OF PROJECT
Gettysburg Borough	Recreation Park - Long Lane	Renovations to park play equipment, walkways, parking, landscaping, and other site improvements
	Recreation Park - Long Lane	Renovations including a tot lot, tennis courts, parking and sign improvements, and other site improvements
	School Park - Lefever Street	Development of tennis, basketball, and shuffleboard courts with support facilities
Littlestown Borough	Littlestown Community Park	Rehabilitation of community pool, including ADA access and other renovations
McSherrystown Borough	McSherrystown Borough Playground & McSherrystown Borough Park	Improvements to sites, including signage, tot lots, recreational infrastructure, and sports areas
Hamiltonban Township	Fairfield Area School Districts	Development of Tennis Courts**
Latimore Township	Arboretum Park	Acquisition of roughly 51 acres of land for both active and passive recreation

DESIGNATED GROWTH AREAS



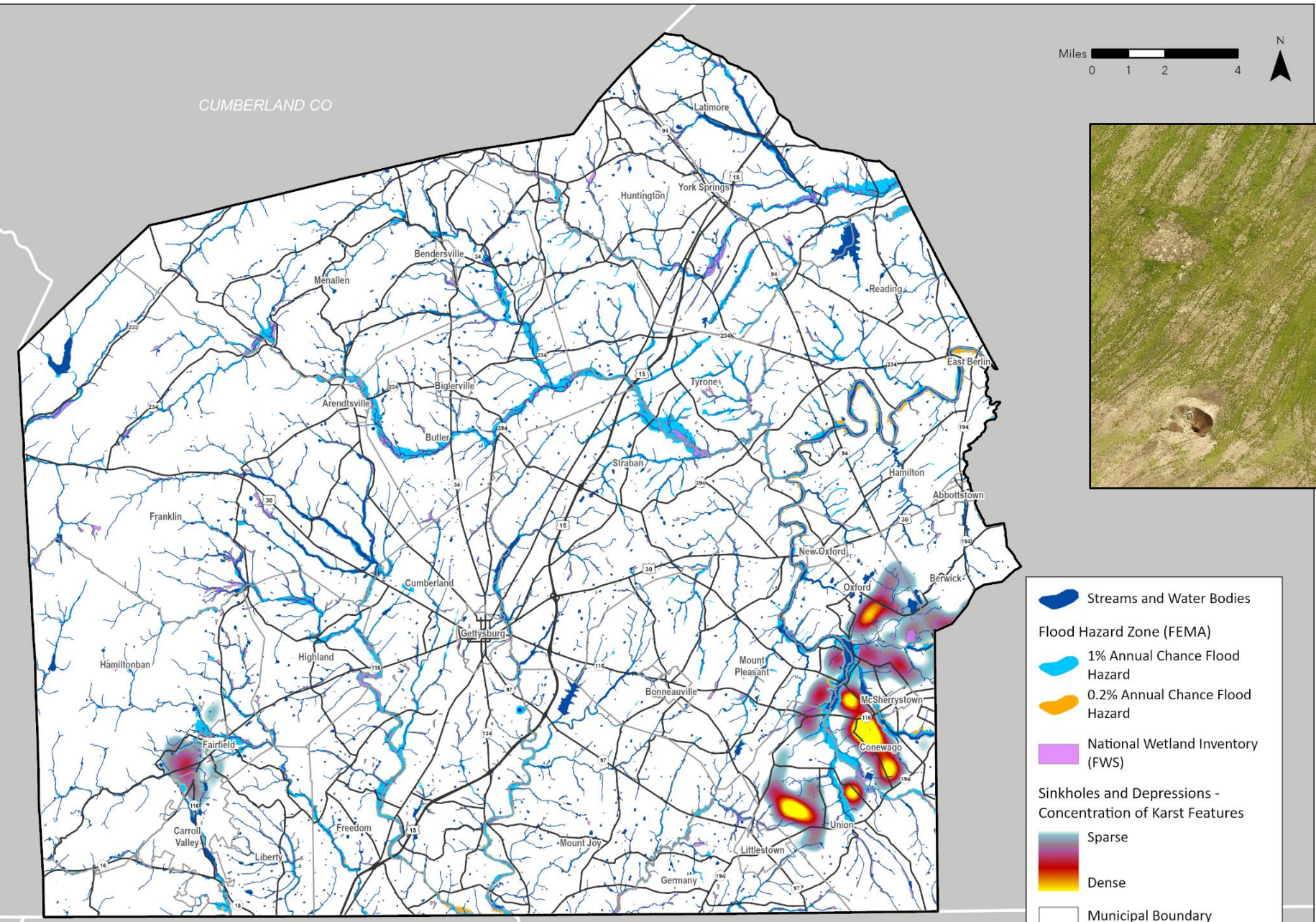
- Identified through updated Municipal Comprehensive Plans or the County Comprehensive Plan (for municipalities without a recent update)
- DGA's extend from existing development








Designated Growth Area

- Primary
- Secondary
- Municipal Boundary
- State Road

Source: ACOPD; map exported 06/03/22

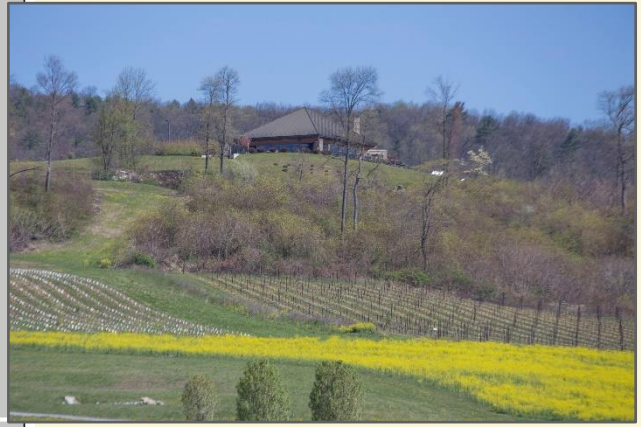
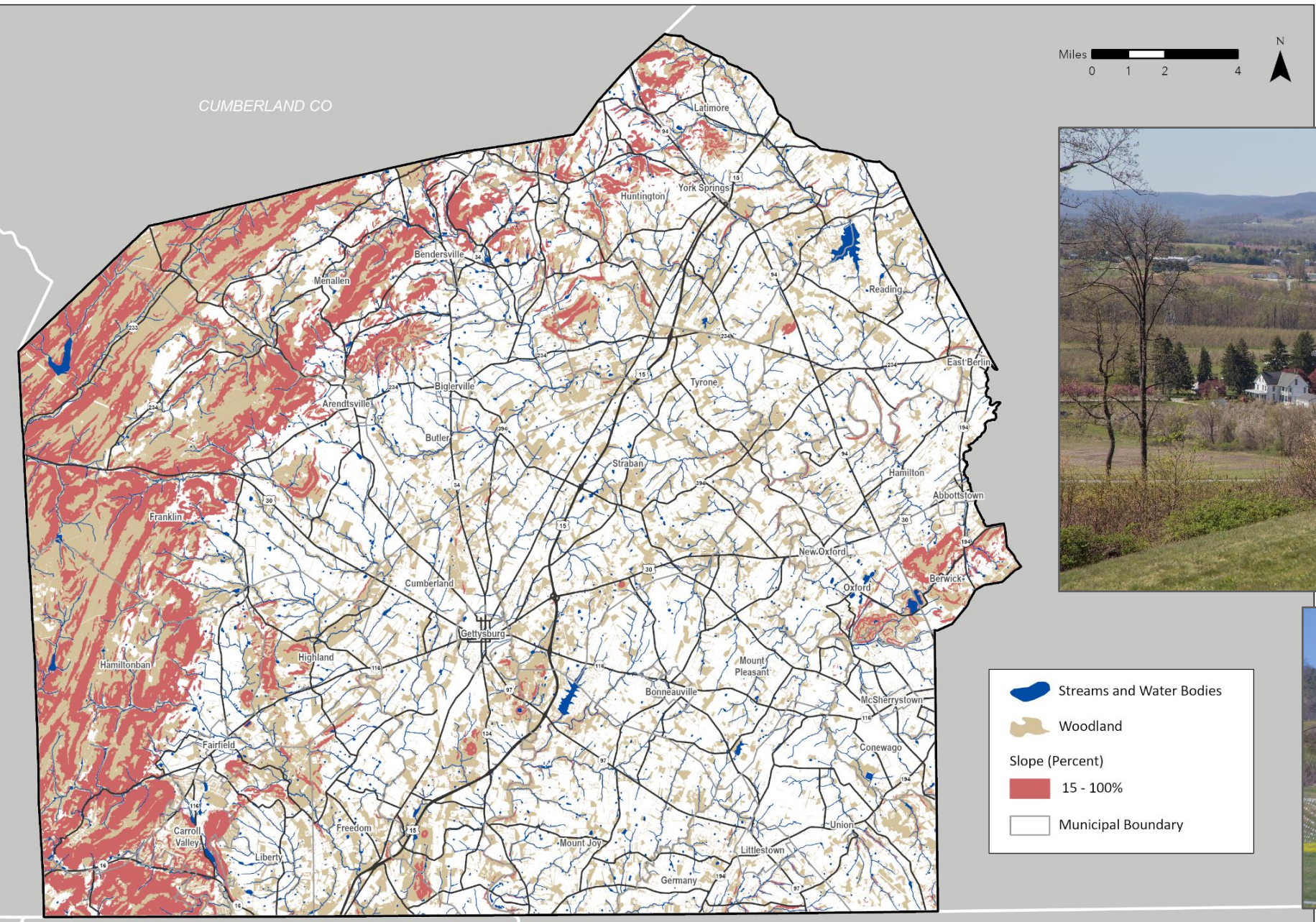
ENVIRONMENTAL CONSTRAINTS



-  Streams and Water Bodies
- Flood Hazard Zone (FEMA)**
-  1% Annual Chance Flood Hazard
-  0.2% Annual Chance Flood Hazard
-  National Wetland Inventory (FWS)
- Sinkholes and Depressions - Concentration of Karst Features**
-  Sparse
-  Dense
-  Municipal Boundary



WOODLAND and STEEP SLOPES

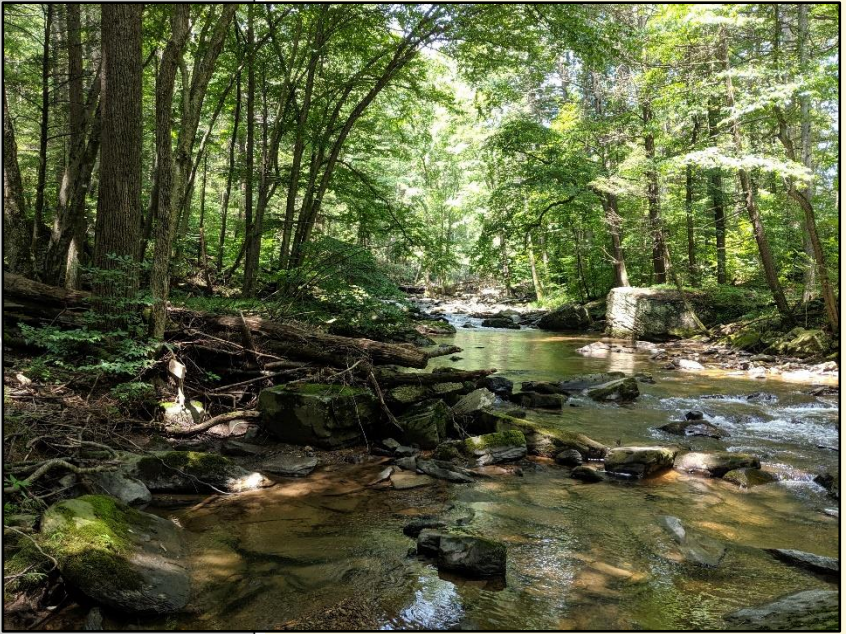
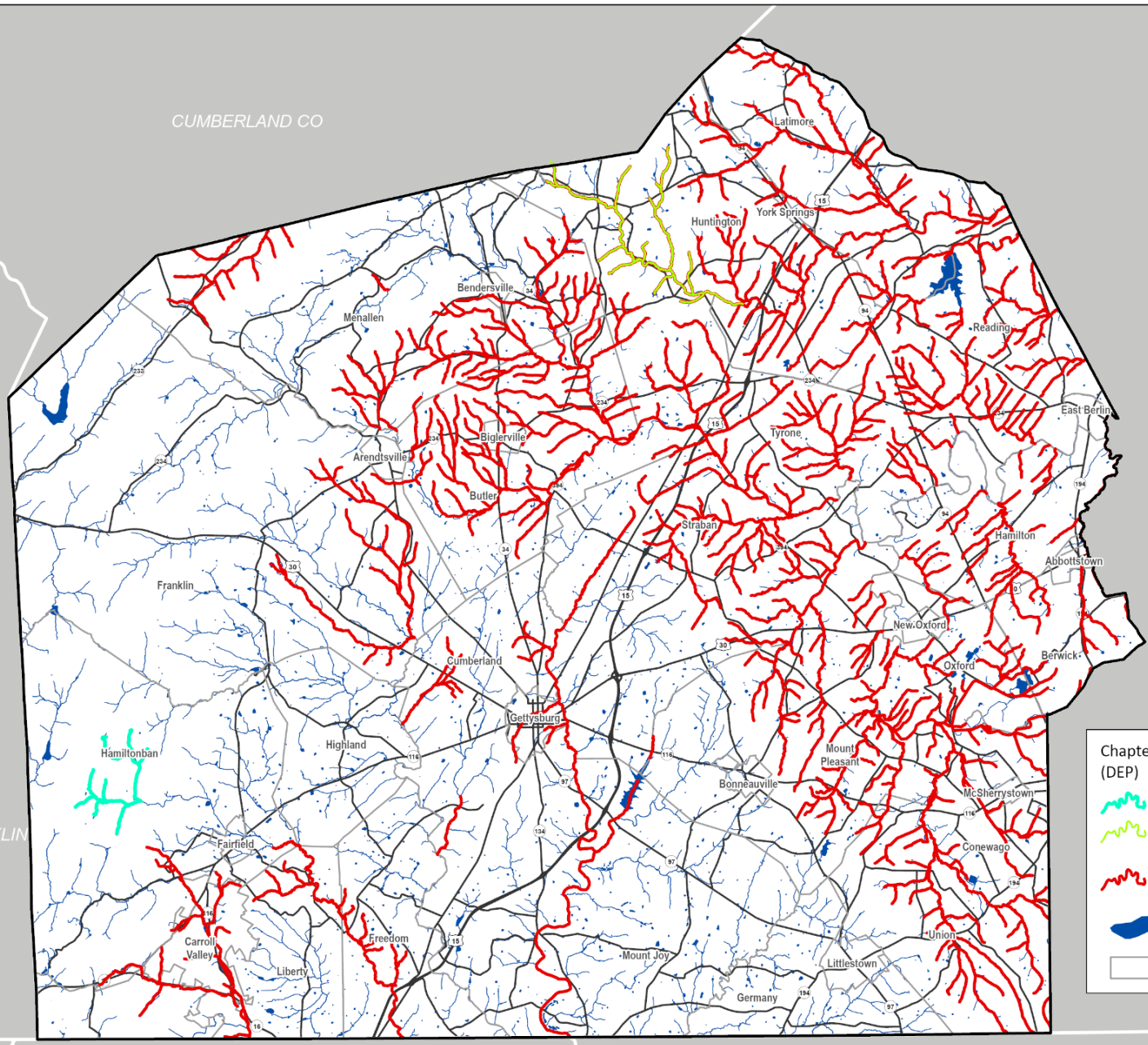


FREDERICK CO, MD

CARROLL CO, MD

Source: ACOPD; FEMA 2020; USGS; Chesapeake Conservancy, Map exported 06/03/22

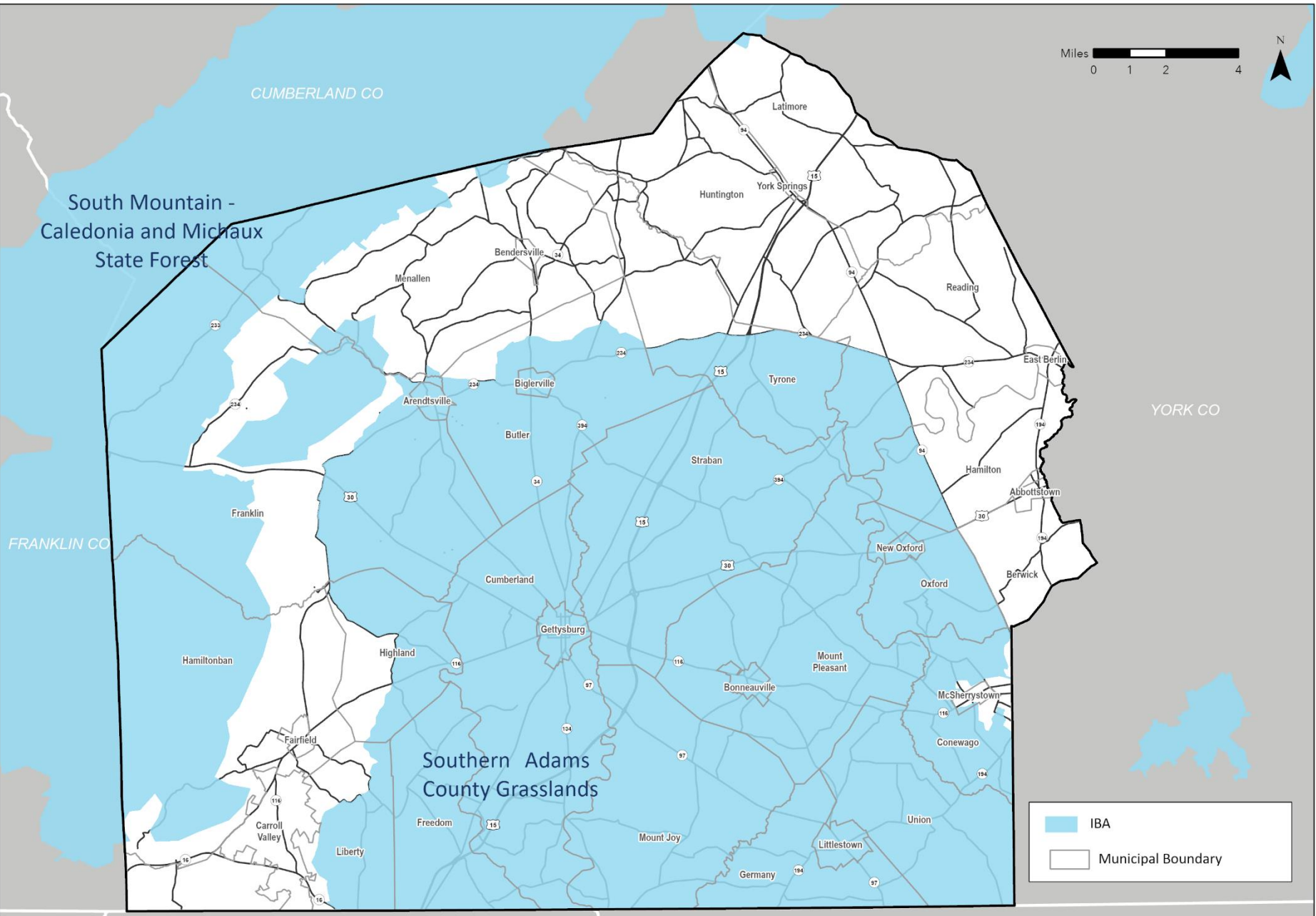
WATER QUALITY



- Chapter 93 Existing Use Streams (DEP)
- EV(EXCEPTIONAL VALUE)
- CWF(COLD WATER FISHES)
- Non-Attaining Streams - Impaired (DEP)
- Streams and Water Bodies
- Municipal Boundary

Source: ACOPI, DEP, Map exported 06/03/22

IMPORTANT BIRD AREAS



Southern Adams County Grasslands

- Extensive Pastures
- Hayfields
- Open Grass Habitats

Barn Owl, Bobolink, Short-eared Owl, Grasshopper Sparrow, Upland Sandpiper, Northern Harrier, Loggerhead Shrike, Eastern Meadowlark, Northern Bobwhite

South Mountain-Caledonia State Park & Michaux State Forest

- Mixed forest area
- Dense understory in stream valleys

Canada Goose, Great Blue Heron, Green Heron, Common Loon, Wood Duck, Mallard, Canada Warbler, Eastern Wood-Pewee, Common Merganser, Hermit Thrush, Pied-billed Grebe, Hooded Warbler, Veery, Oven Bird, Kentucky Warbler

Source: ACOPD; Audubon Society, Map exported 06/03/22

Pennsylvania Endangered and Threatened Species List

Common Name	Scientific Name	State Status	Federal Status
Dragon's Mouth	<i>Arethusa bulbosa</i>	PE	
Short-eared Owl	<i>Asio flammeus</i> *	PE	
Upland Sandpiper	<i>Bartramia longicauda</i> *	PE	
American Bittern	<i>Botaurus lentiginosus</i> *	PE	
Bull Sedge	<i>Carex bullata</i>	PE	
Horrible Thistle	<i>Cirsium horridulum</i>	PE	
North American Least Shrew	<i>Cryptotis parva</i> *	PE	
Wild Bleeding-hearts	<i>Dicentra eximia</i>	PE	
Bog Turtle	<i>Glyptemys muhlenbergii</i> *	PE	LT
Bicknell's Hoary Rockrose	<i>Helianthemum bicknellii</i>	PE	
Dwarf Iris	<i>Iris verna</i>	PE	
Short-fruited Rush	<i>Juncus brachycarpus</i>	PE	
Migrant Loggerhead Shrike	<i>Lanius ludovicianus migrans</i> *	PE	
Warmouth	<i>Lepomis gulosus</i> *	PE	
Kidney-leaved Twayblade	<i>Listera smallii</i>	PE	
Little Brown Bat	<i>Myotis lucifugus</i> *	PE	
Northern Long-eared Bat	<i>Myotis septentrionalis</i> *	PE	LT
Indiana Bat	<i>Myotis sodalis</i> *	PE	LE
Tricolored Bat	<i>Perimyotis subflavus</i> *	PE	
Eastern Mud Salamander	<i>Pseudotriton montanus montanus</i> *	PE	
Shumard's Oak	<i>Quercus shumardii</i>	PE	
Tufted Buttercup	<i>Ranunculus fascicularis</i>	PE	
Northeastern Bulrush	<i>Scirpus ancistrochaetus</i>	PE	LE
Branching Bur-reed	<i>Sparganium androcladum</i>	PE	
Dickcissel	<i>Spiza americana</i> *	PE	
A Sedge	<i>Carex tetanica</i>	PT	
Southern Bog Clubmoss	<i>Lycopodiella appressa</i>	PT	
Sweet Bay Magnolia	<i>Magnolia virginiana</i>	PT	
Eastern Small-footed Bat	<i>Myotis leibii</i> *	PT	
Allegheny Woodrat	<i>Neotoma magister</i> *	PT	
Northern Red-bellied Cooter	<i>Pseudemys rubriventris</i> *	PT	
Eastern Spadefoot	<i>Scaphiopus holbrookii</i> *	PT	

STATE CODES

PE – Pennsylvania Endangered
PT – Pennsylvania Threatened

FEDERAL CODES

LE – Listed Endangered
LT – Listed Threatened



mdc.mo.gov

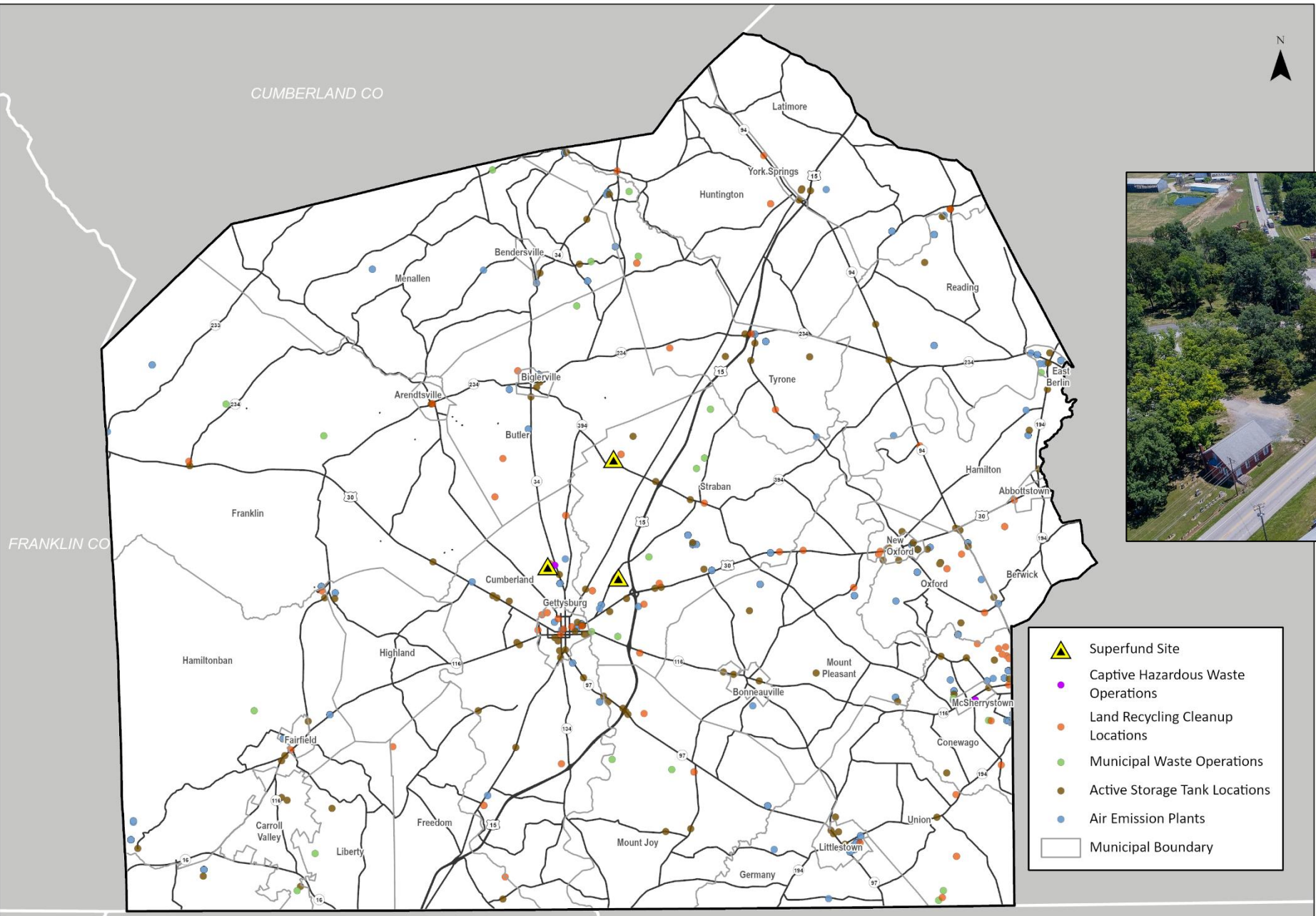


fs.fed.us



nrcs.usda.gov

HAZARDOUS WASTE



- ▲ Superfund Site
- Captive Hazardous Waste Operations
- Land Recycling Cleanup Locations
- Municipal Waste Operations
- Active Storage Tank Locations
- Air Emission Plants
- Municipal Boundary

Hypothetically and without regard to specific projects, given your professional expertise and ideal in-field circumstances, what type of mitigation measures do you recommend for this mix of funding priorities and resources?

FUNDING CLASSES	
Categories	% Overall Allocation
Safety	25%
Pavement	21%
Bridges	20%
Alternative Fuels	7%
Connectivity	6%
Active Transportation (Bicycle/Pedestrian)	5%
ITS	4%
Transit	4%
Freight/Rail	3%
Connected/ Autonomous Vehicles	2%
Signals	2%
Signs	1%

FEATURE / RESOURCE	% of Total Area
Land Cover	100.0%
Developed	4.6%
Cropland/ Open	53.6%
Wooded	41.0%
Water	0.8%
Steep Slopes (>15%)	13.1%
Floodplain/ Floodway	7.4%
Designated Growth Areas	17.6%
Primary	14.7%
Secondary	2.9%
Protected Land	21.5%
Preserved Farms	7.4%
Land Conservancy of AC	3.6%
GNMP	2.0%
PA State Game Lands	0.6%
Michaux State Forest	7.9%

Questions?



ONWARD2050

Adams County Long Range Transportation Plan

Contact Information:

Adams County Office of Planning and Development

Andrew Merkel: amerkel@adamscounty.us

Laura Neiderer: lnneiderer@adamscounty.us

Phone: 717-337-9824